

HP6J 600V DC Class J Photovoltaic Fuses

About the HP6J Fuse

Mersen's HP6J photovoltaic (PV) fuse series was engineered and designed specifically for the protection of photovoltaic systems. Its enhanced fuse construction makes it ideal for continuous temperature and current cycling withstand adding to system longevity. The 600VDC rated HP6J designed for low minimum breaking capacity capabilities of 1.35 times the fuse rated current value allows for safe circuit interruption under typical low fault current conditions produced by PV arrays. Protect your off-grid or grid tied PV system from unexpected ground faults and line faults using Mersen's Helio Protection fuse line.

Features/Benefits:

- Smallest footprint in the industry
- UL class J dimensions
- Low fault current interrupting capability
- Durable construction for enhanced system longevity
- Temperature cycle withstand capability
- Guaranteed operation at temperature extremes
- Industries first UL Listed Solution
- Globally accepted

Applications:

- Re-combiner (sub-combiner, array combiner, master combiner) applications
- Inverter DC input protection
- Battery charge controllers

Catalog Numbers (amps)

Frame Size 1	Frame Size 2	Frame Size 3	Frame Size 4
HP6J70	HP6J110	HP6J225	HP6J450
HP6J80	HP6J125	HP6J250	HP6J500
HP6J90	HP6J150	HP6J300	HP6J600
HP6J100	HP6J175	HP6J350	
	HP6J200	HP6J400	

Catalog Numbers - Fuseholder

Ampere Rating	Clip Configuration	Box Terminal to Box Terminal Configuration, 1-Pole				Temperature Rating of Wire Terminal
		Wire Range	Wire Type	Stud Type	Catalog No.	
100	In-line	2/0 - #6	Cu	-	61006HPJ	90° C
200	Side	350kcmil - #6		-	62001HPJ	
400	In-line	(2) 350kcmil - #6	Al/Cu	-	64031HPJ	75° C
600	In-line	(2) 500kcmil - #4		-	6631HPJ	

For additional configurations and information view Mersen's Solar Power Solutions Guide at <http://ep-us.mersen.com/solarpower>



Ratings:

- Volts** : 600VDC
- Amps** : 70 to 600A
- IR** : 10kA I.R. DC
- MBC** : 1.35 x In

Photovoltaic Fuse

Approvals:

- UL Listed to Standard UL2579 File E333668
- CSA Component Certified C22.2



Shah & Shah Enterprise

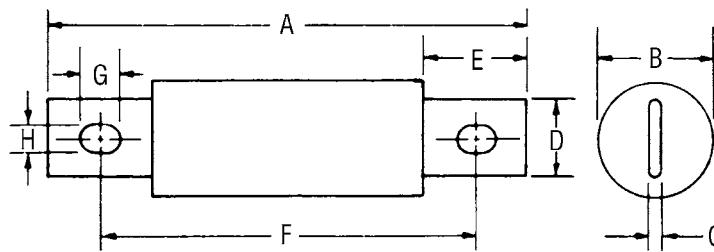
www.shahent.co.in

HP6J 600V DC Class J Photovoltaic Fuses

Electrical Specifications

Catalog Number	Ampere Rating (A)	Voltage (VDC)	Interrupting Rating (kA)	Watts Loss @ 80% x In (W)	Watts Loss @ 100% x In (W)
HP6J70	70	600	10	5.8	10
HP6J80	80	600	10	6.4	11
HP6J90	90	600	10	7.5	13
HP6J100	100	600	10	8.1	14
HP6J110	110	600	10	10.4	18
HP6J125	125	600	10	11	19
HP6J150	150	600	10	12.8	22
HP6J175	175	600	10	13.9	24
HP6J200	200	600	10	15.1	26
HP6J225	225	600	10	17.4	30
HP6J250	250	600	10	20.9	36
HP6J300	300	600	10	22	38
HP6J350	350	600	10	23.2	40
HP6J400	400	600	10	24.4	42
HP6J450	450	600	10	33.6	58
HP6J500	500	600	10	34.2	59
HP6J600	600	600	10	39.4	68

Dimensions



Frame Size	Ampere Rating	A		B		C		D		E		F		G		H	
		in	mm	in	mm	in	mm	in	mm	in	mm	in	mm	in	mm		
1	70-100	4-5/8	117	1-1/16	27	1/8	3.2	3/4	19	1	25	3-5/8	92	3/8	10	9/32	7
2	110-200	5-3/4	146	1-5/8	41	3/16	4.8	1-1/8	29	1-3/8	35	4-3/8	111	17/32	14	9/32	7
3	225-400	7-1/8	181	2-1/8	54	1/4	6.3	1-7/8	41	1-7/8	48	5-1/4	133	17/32	14	13/32	10
4	450-600	8	203	2-1/2	64	3/8	9.5	2	51	2-1/8	54	6	152	11/16	18	17/32	13

